

QSW-4624MP

**24 x 1G/2.5G, RJ45 + 6 x 1G/10G SFP+ with 24 x PoE+ Managed Switch
720W Power Budget**

Preliminary



The next generation PoE switch in high-density port configuration leveraged NBase-T multi-gigabit technology, QSW-4624MP, is designed for SMB and enterprise to migrate to the reliable and secure Ethernet based high speed network access by connecting the existed Cat5e/Cat6 cabling infrastructure from 1Gbps to multi-gigabit speed. It is ideal solution to save your investment without disruptive and expensive wiring reconstruction required for offering more bandwidth capacity.

The latest content richer application and technology such as WiFi 6E/7 wireless access and 4K UHD video streaming or IP surveillance make the standard gigabit reveal the problem of bandwidth insufficiency. QSW-4624MP is equipped 24 ports 1G/2.5G RJ45 and 6 slots 1G/10G SFP+ uplink. Each Ethernet copper port complies with IEEE 802.3at standard to supply 30W power injection maximum. The 10G uplink ports relieve the insufficiency of Gigabit links to offer instantly demanding bandwidth consumption for PoE powered FHD/UHD IPcam surveillance, WiFi network access in the enterprise network.

It is featured completely L2+ switch functionality which guarantees high network availability, robust network access and security as well as comprehensive QoS in the network edge. It will deliver the benefits of optimal traffic transportation performance and lower ownership cost while maintaining the network deployment simply.

Features

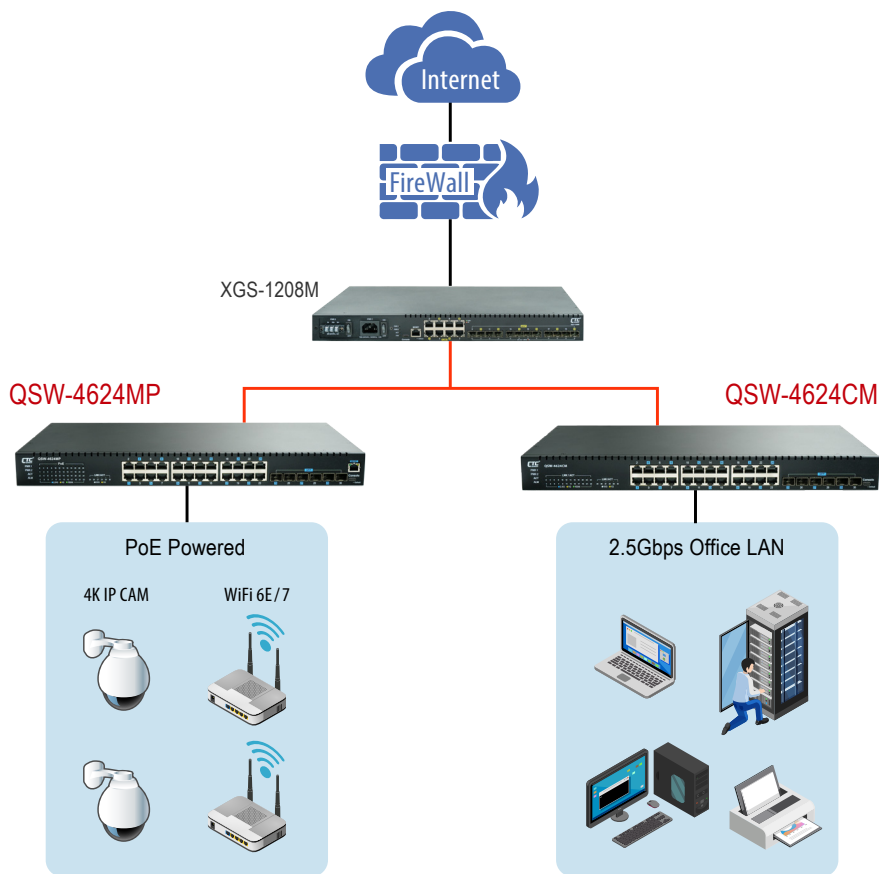
- 24 × RJ45/PoE+ ports with 720W power budget totally
- Cable diagnostics to test UTP cable or determine broken point distance
- Text based CLI configuration download and upload
- Advanced PoE management
 - PoE PD failure auto check and reset if PD failed
 - PoE port on/off scheduling
 - PoE configuration for power planning

Specifications

Interface	Fiber port: 6x 1G/10G SFP+	
	Copper port: 24x 1G/2.5G RJ45	
	Management port: 1x 10/100/1000Base-T RJ45	
	Console port: 1x RS-232 in USB type C	
Packet forwarding Rate	14880pps	@10Mbps
	148800pps	@100Mbps
	1488000pps	@1000Mbps
	3720000pps	@2.5Gbps
	14880000pps	@10Gbps
PoE Power Budget	720Watts	
Switching Fabric Capacity	240Gbps	
Transmission Method	Store and Forward Switching	
Packet Buffer	32M bits	
MAC Table Size	32K	
Jumbo Frame Size	10K Bytes	

Access Switch

VLAN Feature	IEEE 802.1Q tagged VLAN (4K VLAN groups)
	IEEE 802.1ad QinQ VLAN
	Voice VLAN, MAC based VLAN, Protocol based VLAN
	IP subnet based VLAN
	Private VLAN for port isolation, VLAN translation
Link Aggregation	Static trunk (SA, DA, IP, TCP/UDP port)
	IEEE 802.3ad LACP, 15 LACP trunk groups Max; 8 port Max. per LACP trunk, IEEE 802.1AX
L2 Switching Protection	IEEE 802.1D STP/IEEE 802.1w RSTP/IEEE 802.1s MSTP, Loop Protection
QoS Feature	Hard wired IEEE 802.1p 8 priority queues per port, Traffic scheduling based on strict/WRR priority
	CoS based traffic classification on switch port, VLAN ID, DSCP, TCP/UDP port
	IEEE 802.1p priority tag remarking, DSCP remarking
	Per port/queue based ingress/egress rate limit in steps of 100kbps
	IEEE 802.3x flow control
	IEEE 802.1Qbb priority based full-duplex flow control
Security	Multicast/Broadcast/Unicast storm control with flooding control
	Static port security (MAC based)
	Per port limited MAC learning
	Port based/MAC base/single/multiple IEEE 802.1x access control
	512 ACL rules based on L2~L4 information
	RADIUS/TACACS+ AAA
	HTTPs & SSH v2
	IP/MAC binding
IP Multicasting	IP source guard & ARP inspection
	IGMP snooping v1/v2/v3, IGMP proxy
	MLD snooping v1/v2
	IGMP fast leave
	IGMP query
	IGMP filtering/throttling
Management	MVR (Multicast VLAN Registration)
	WebGUI/Telnet CLI interface
	SNMP v1/v2c/v3
	RMON I (1,2,3,9 groups) & RFC1213 MIB II
	DHCP client/snooping/relay option 82
	TFTP/HTTP based firmware and configuration upgrade
	Port mirroring, RSPAN
	Event syslog server
	DNS client/proxy
	NTP client
	UPnP
	IPv4/IPv6 management
	SFF-8472 DDMI
IEEE 802.1ab LLDP	
Advanced PoE Management	PoE PD failure auto check and reset if PD failed
	PoE port enable/disable
	Power limit by PD classification
Power Input	AC power input (100~240V)
Power Consumption	800W @ PoE full load
Operating Temperature	0~50°C
Storage Temperature	-25~70°C
Humidity	5%~95% (non-condensing)
Dimension	440 x 280 x 43.5 mm (W x D x H)
Certification	CE, FCC class A



Ordering Information

Model Name	Description
QSW-4624MP	24 x 1G/2.5G RJ45 + 6 x 1G/10G SFP+ L2+ Managed PoE Switch

Optional Accessory

• 10G SFP+ Transceiver Module

Model Name	Description
SFM-1000-SR85	10G SFP+ SR/SW MMF 300m, 850nm VCSEL, 10G Ethernet/FC/SDH/SONET
SFS-1010-LR31	10G SFP+ LR/LW SMF 10km, 1310nm DFB DML, 10G Ethernet/FC/SDH/SONET
SFS-1040-ER55	10G SFP+ ER/EW SMF 40km, 1550nm DFB EML, 10G Ethernet/FC/SDH/SONET
SFS-1080-ZR55	10G SFP+ ZR/EW SMF 80km, 1550nm DFB EML, 10G Ethernet/FC/SDH/SONET